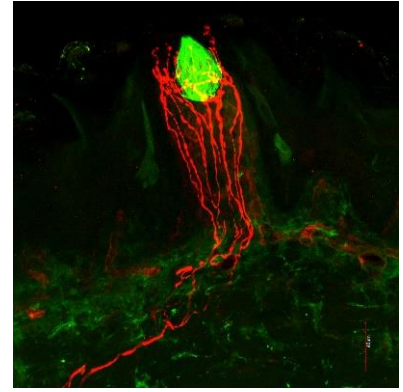


Job Title: Postdoctoral Researcher - Awake Behaving Electrophysiology in Mice (Trigeminal Ganglion)

Job Description: We are seeking a highly motivated and talented Postdoctoral Researcher to join our dynamic research team at the University of Louisville School of Medicine. The successful candidate will contribute to a cutting-edge project to examine somatosensory neurons innervating the tongue and surrounding taste buds. To accomplish this goal, we will utilize a combination of genetic, anatomical, and electrophysiological approaches. We will be focused on awake behaving electrophysiology in mice, to determine how trigeminal neurons respond during licking and eating. This position offers an excellent opportunity for a skilled scientist to advance their career in neuroscience research, to make significant contributions to the field, and to develop their own research niche. This position is fully NIH funded for the next 2-4 years, during this time the postdoctoral candidate will be supported and guided to develop independent funding and gain independence as a scientist.



Qualifications:

- A Ph.D. in Neuroscience or a related field.
- Background in electrophysiological techniques, including surgical electrode implantation in mice is preferred.
- Experience with data analysis using MATLAB, Python, or other relevant software.
- Excellent organizational skills and attention to detail.
- Ability to work both independently and collaboratively in a research team.
- Excellent verbal and written communication skills.
- Demonstrated track record of scientific productivity, including publications in peer-reviewed journals.

Work Environment:

The successful candidate will join a vibrant and collaborative research environment at the University of Louisville, which provides state-of-the-art facilities and resources for neuroscience research. You will have the opportunity to work closely with a team of experienced researchers, offering a supportive and stimulating work atmosphere that fosters professional growth and scientific excellence.

Diversity, Equity, And Inclusion Statement:

Our department (Anatomical Sciences and Neurobiology) and our laboratories are committed to creating an equitable and inclusive environment. Our laboratories are committed to contributing to the diversity of the next generation of scientists. UofL has distinguished itself in its commitment to diversity, ranked #1 nationally for serving African American students by the University of Southern California's Race and Equity Center, #1 by three national groups for being LGBTQ-friendly, and 12th nationally for community engagement. To find out more about UofL's inclusion efforts, see: <http://louisville.edu/diversity>

City of Louisville:

Louisville, Kentucky is the 29th largest city in the nation and offers the perfect blend of small-town charm and cosmopolitan advantages. The city has a thriving arts and sports community, world-class health facilities, nationally recognized schools, a scenic waterfront, superb restaurants, and a quality of life that is the envy of many larger metropolitan centers.

Application Process:

To apply for this position, please submit the following documents as a single PDF file:

- A cover letter describing your research interests and relevant experience.
- A detailed curriculum vitae (CV) with a list of publications.
- Contact information for three references.

Please email your application to rfkrim01@louisville.edu with the subject line "Postdoc Application - Awake Behaving Electrophysiology."

Review of applications will begin immediately and continue until the position is filled. We strongly encourage applicants from underrepresented backgrounds to apply. Compensation and benefits will be commensurate with experience and based on NIH guidelines.

Note: Only shortlisted candidates will be contacted for an interview.